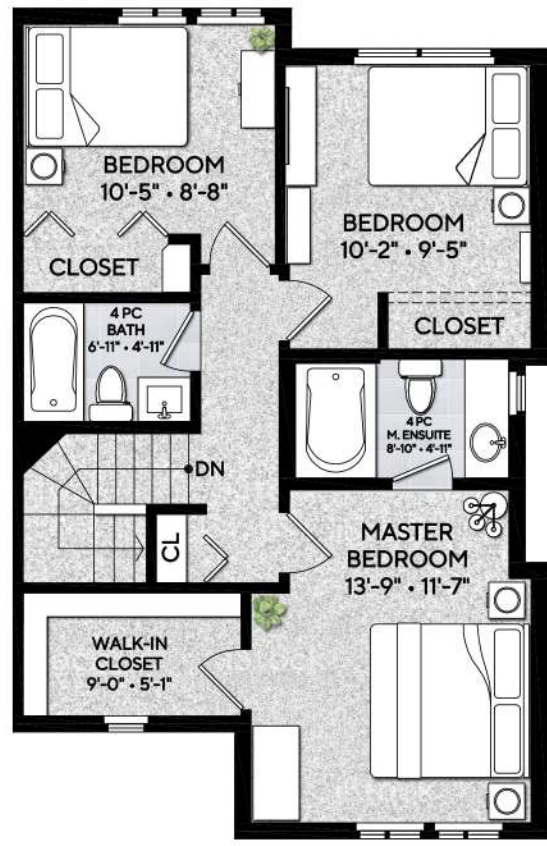


**8 • 225 15TH STREET W
 NORTH VANCOUVER**

MAIN	673 SQFT
UPPER	665 SQFT
LOWER	373 SQFT
GRAND TOTAL	1711 SQFT

ADDITIONAL AREA
 ENTIRE YARD 868 SQFT



LOWER | 373 SQFT
 [8'-0" CEILING HEIGHT]

UPPER | 665 SQFT
 [8'-0" CEILING HEIGHT]

MAIN | 673 SQFT
 [8'-0" CEILING HEIGHT]



[JULY 31 2022]

